

Suspended Sedna Linkable T5

cryselco.co.uk/sel



Also available in an unlinked variant.

How to order linkable versions:

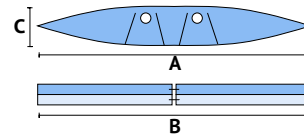
F = First in line. Standard end cap one end and through wiring.

T = Through wiring version (order as many as required). Modified end caps are unsuitable for ends.

L = Last in line. Standard end cap one end but no through wiring as end of line.

BD = Blank Dummy available in 3 sizes, 600mm, 1200mm & 1500mm. Painted steel plate in place of louvre. Allows for through wiring only. Blank Dummies are available for twin fittings. Please enquire for single dummies.

Linkable Sedna T5 C/W Suspension Kit				
Cat. No.	Lamps Req	A	B	C
SED312/128 T5/SATIN/LINK/ F,T or L	1 x 28w T5	250	1188	55
SED312/154 T5/SATIN/LINK/ F,T or L	1 x 54w T5	250	1188	55
SED315/135 T5/SATIN/LINK/ F,T or L	1 x 35w T5	250	1488	55
SED315/149 T5/SATIN/LINK/ F,T or L	1 x 49w T5	250	1488	55
SED312/228 T5/SATIN/LINK/ F,T or L	2 x 28w T5	330	1188	55
SED312/254 T5/SATIN/LINK/ F,T or L	2 x 54w T5	330	1188	55
SED315/235 T5/SATIN/LINK/ F,T or L	2 x 35w T5	330	1488	55
SED315/249 T5/SATIN/LINK/ F,T or L	2 x 49w T5	330	1488	55
SED Twin BD 600	N/A	330	590	55
SED Twin BD 1200	N/A	330	1188	55
SED Twin BD 1500	N/A	330	1488	55



Control Gear options
 Digital SwitchDIM dimming, Analogue 1 to 10 volt dimming, DSI and DALI, Emergency Conversion

For the fixing centres of the cable supports, please enquire, as these vary between sections.

