

Surface Jupiter

cryselco.co.uk/sjp



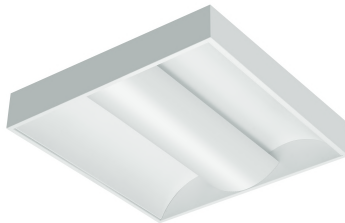
This is the surface range designed to complement our very popular recessed Jupiter fittings. Manufactured from white powder coated steel. The range is suitable for a wide range of applications including office environments, reception areas etc.

The choices include a centrally mounted perforated metal diffuser with internal opal sheet to diffuse downward light. Upward light from the compact fluorescent tubes is reflected by means of 2 white curved metal reflectors producing a soft light and no sharp cut-off angle. All light from this fitting is indirect.

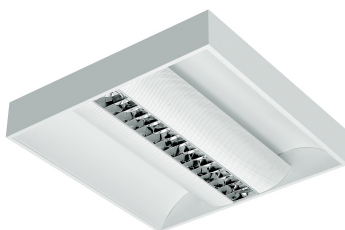
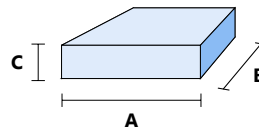
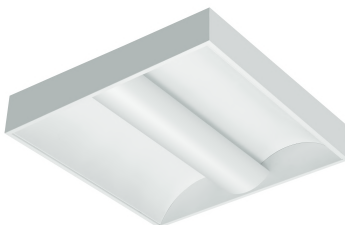
There are two louvre versions, one with a narrow louvre suitable for T5 tubes where one of the three T5 tubes is above the louvre and the other two are above the side perforated metal diffusers. The narrow louvre version is also used to house single TC-L lamp above the louvre.

The wider louvre version is suitable for twin TC-L lamps or 2 x T5 lamps where the lamps are mounted above the louvre. The louvres for both types are mounted centrally and are manufactured from mirrored aluminium to achieve compatibility with VDT installations. These fittings give both direct light (via the louvre) and indirect light (via the perforated metal diffuser) and have been designed with both LG3 : 2001 and LG7 in mind.

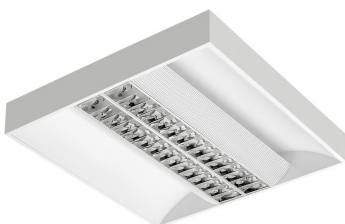
Emergency - Three hour maintained integral emergency conversion available.



Surface Jupiter with Perforated Metal Diffuser				
Cat. No.	Lamps Req	A	B	C
SJPT/66/1PL40	1 x 40w TC-L	620	620	100
SJPT/66/1PL55	1 x 55w TC-L	620	620	100
SJPT/66/2PL40	2 x 40w TC-L	620	620	100
SJPT/66/2PL55	2 x 55w TC-L	620	620	100



Surface Jupiter with Inserted Louvre				
Cat. No.	Lamps Req	A	B	C
SJPT66/314/LVR	3 x 14w T5	620	620	100
SJPT66/324/LVR	3 x 24w T5	620	620	100
SJPT66/1PL40/LVR	1 x 40w TC-L	620	620	100
SJPT66/1PL55/LVR	1 x 55w TC-L	620	620	100



Surface Jupiter with Inserted Wide Louvre				
Cat. No.	Lamps Req	A	B	C
SJPT66/214/LVRNW	2 x 14w T5	620	620	100
SJPT66/224/LVRNW	2 x 24w T5	620	620	100
SJPT66/2PL40/LVRNW	2 x 40w TC-L HF	620	620	100
SJPT66/2PL55/LVRNW	2 x 55w TC-L HF	620	620	100

Control Gear options

Digital SwitchDIM dimming, Analogue 1 to 10 volt dimming, DSI and DALI, Emergency Conversion

Fixing points are 400mm x 400mm (4 holes) on all versions.